

NET SatisFAXtion™ 8.5 AudioCodes MediaPack Hardware Installation Guide

AudioCodes MP114
AudioCodes MP118

8.5

Contents

Installing AudioCodes MediaPack Hardware	2
Installing NET SatisFAXtion	2
Configuring the AudioCodes MediaPack for DTMF Collection	10
Configuring the MediaPack (FXS only) for analog DID Collection	11



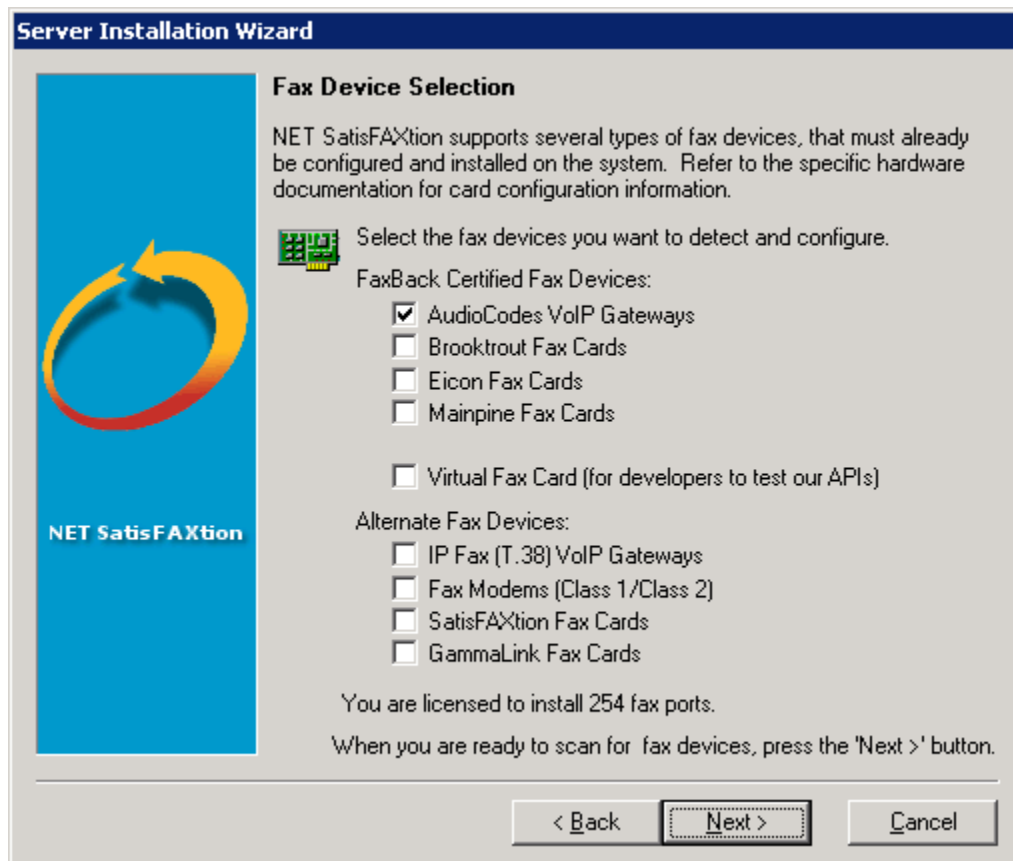
Installing AudioCodes MediaPack Hardware

Unpack your AudioCodes MediaPack. Plug in the Ethernet cable and the phone lines, but do not plug in the power at this time.

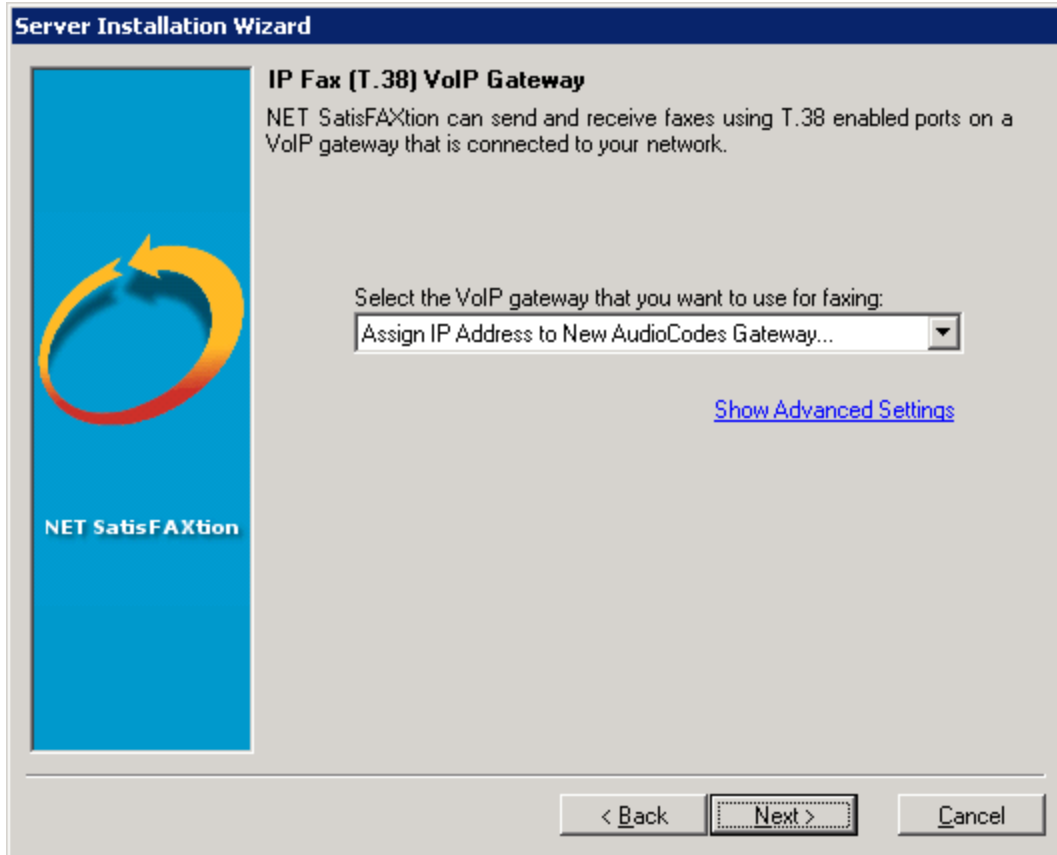
Installing NET SatisFAXtion

Install NET SatisFAXtion according to the normal instructions. However, there are some steps that must be changed:

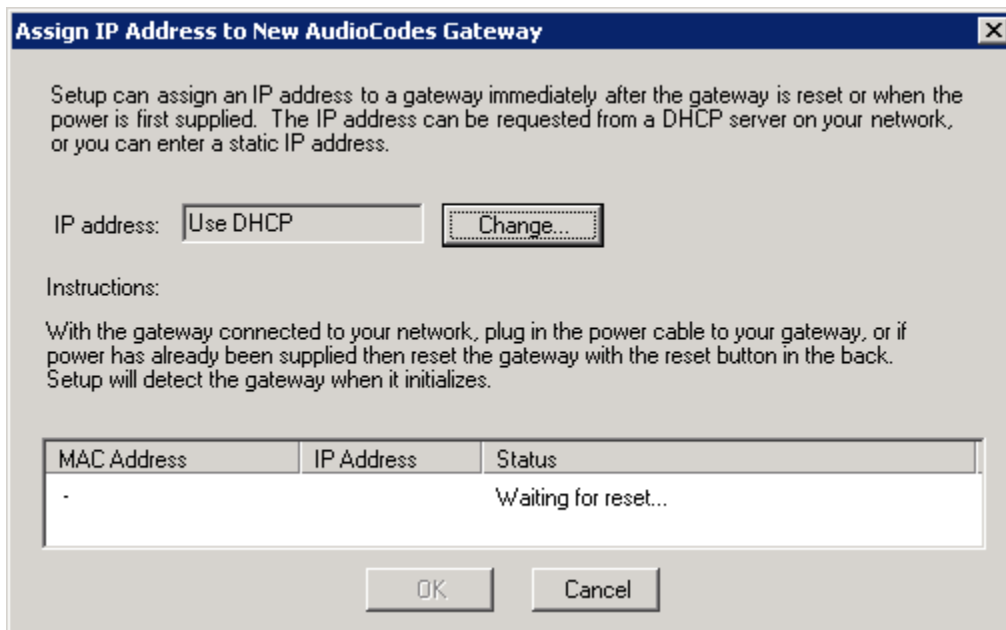
Setup will ask you to identify what hardware you have installed. Select AudioCodes VoIP Gateways.



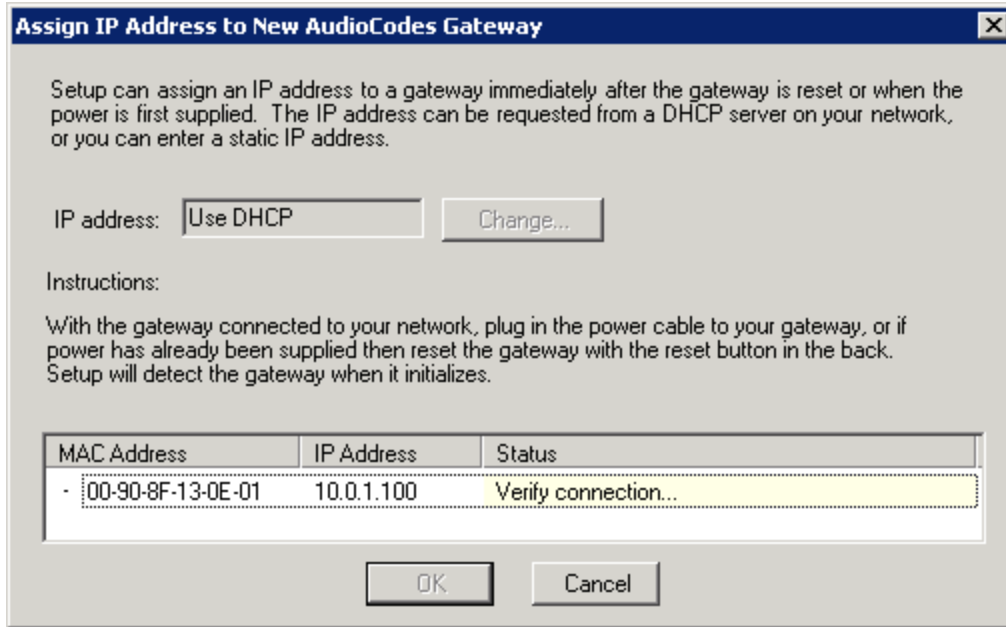
Next, Setup will allow you to assign an IP address to a new AudioCodes Gateway.



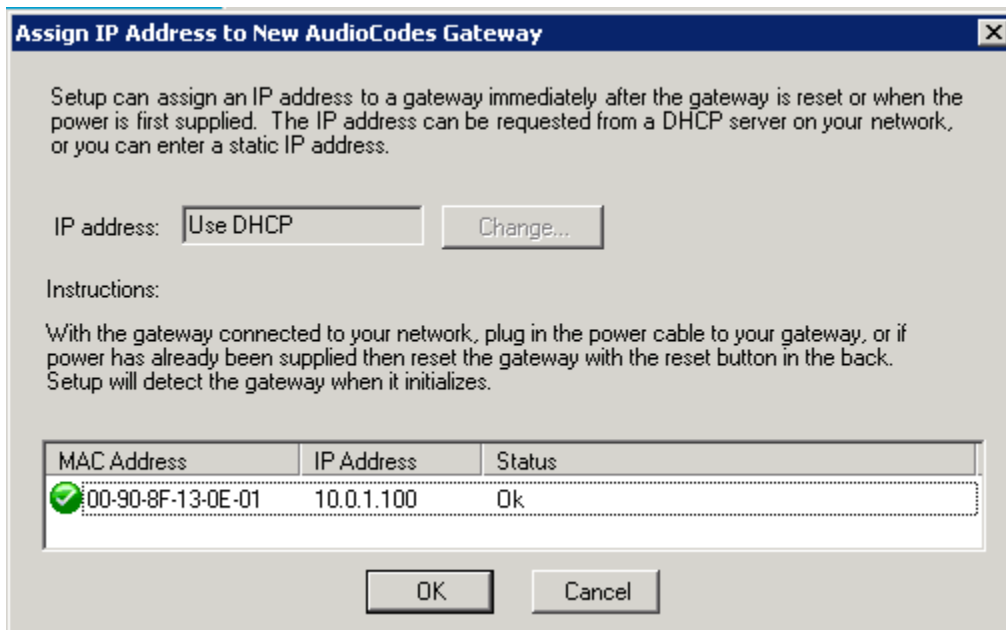
Click Next. At this time, Setup will wait for the MediaPack to reset. If a static IP is required, click the Change button and configure the static IP to assign to the MediaPack before resetting the device.



Plug in the power cable on the MediaPack. Or, if the MediaPack already has power, unplug it and plug it back in to reset the device.

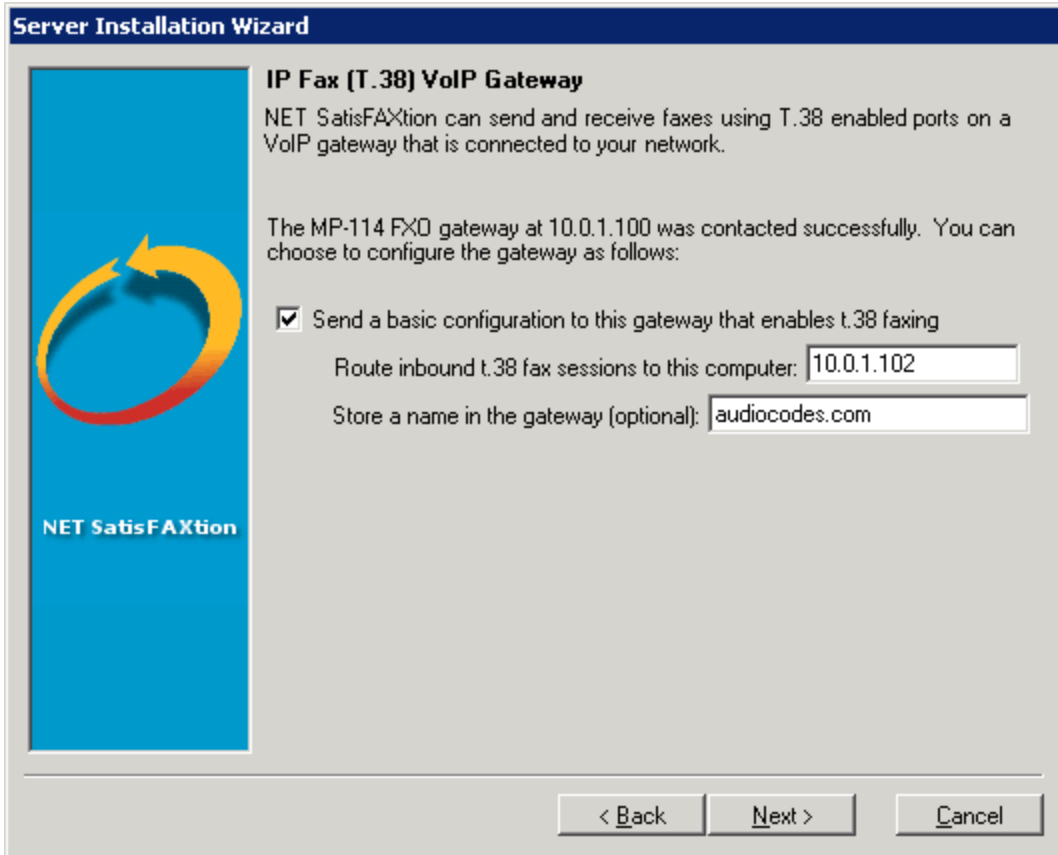


When the MediaPack boots up, Setup will detect it on the network and assign an IP address to it. Setup will display an Ok status when the IP address has been successfully applied.

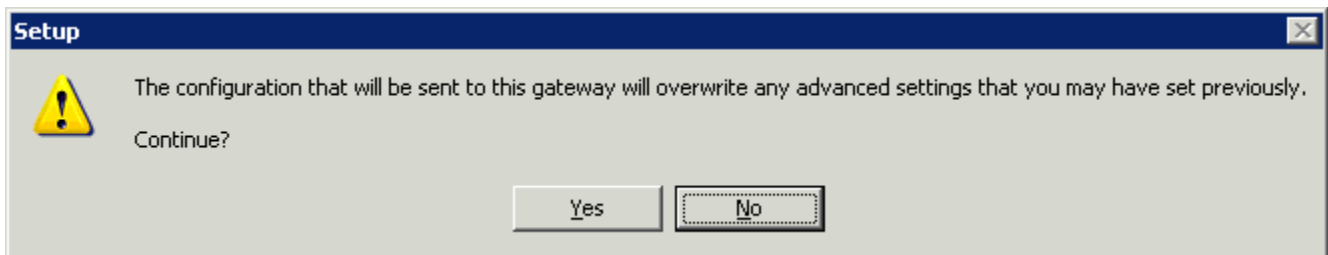


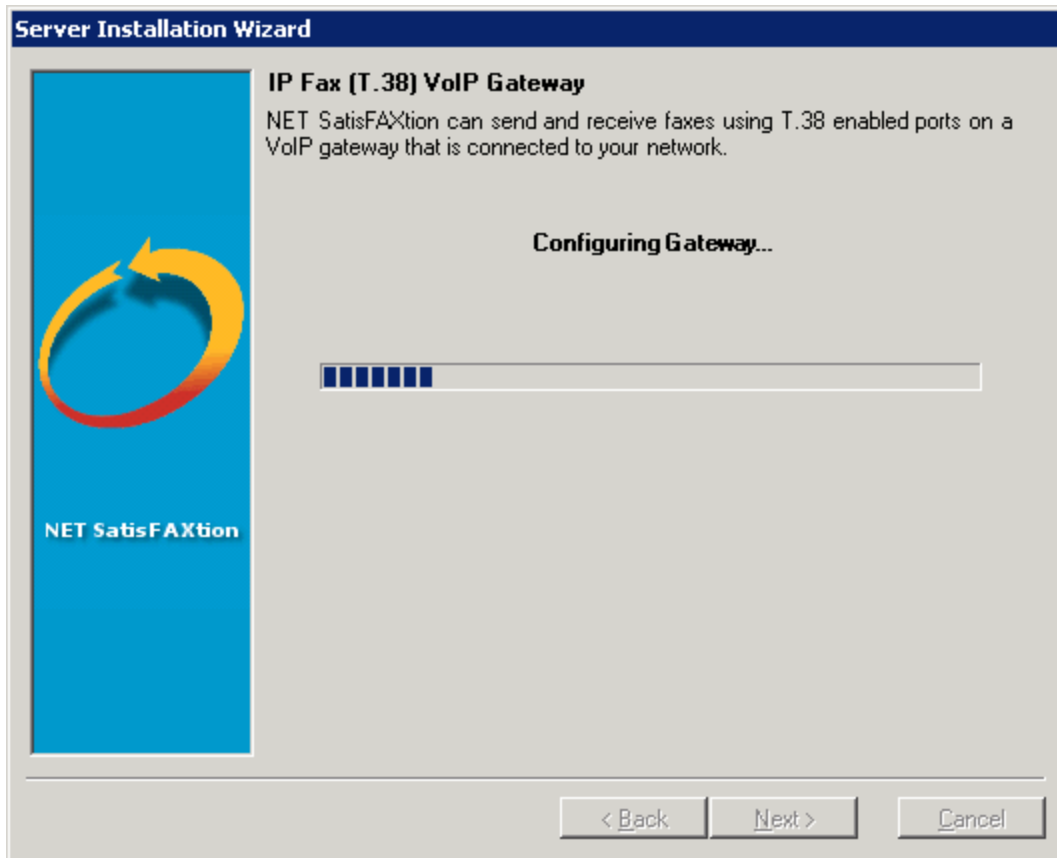
Click OK.

Now Setup will apply an initial configuration to the MediaPack. It will also upgrade the firmware, if needed. You may optionally assign a descriptive name to this MediaPack, if there are multiple AudioCodes devices on your network.

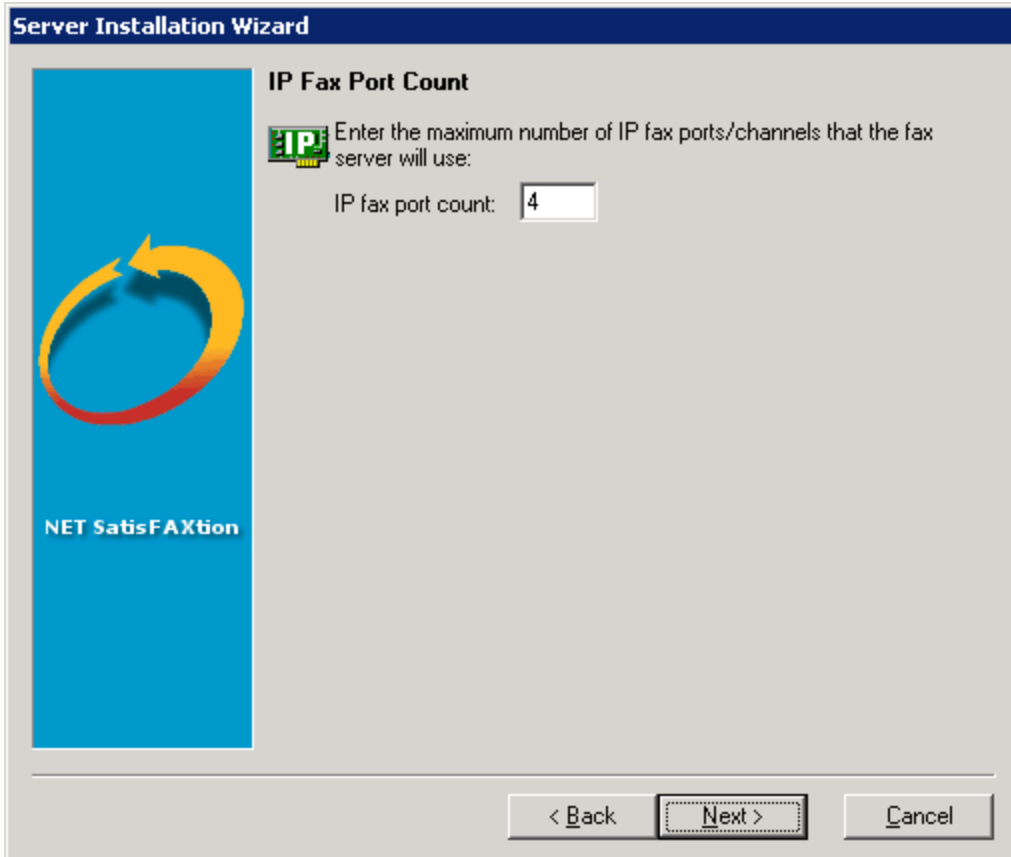


If this is a MediaPack that is used for other purposes in addition to fax, or if you have made any custom changes do not use Setup to apply a configuration. This configuration will overwrite any and all settings you have made to the MediaPack.

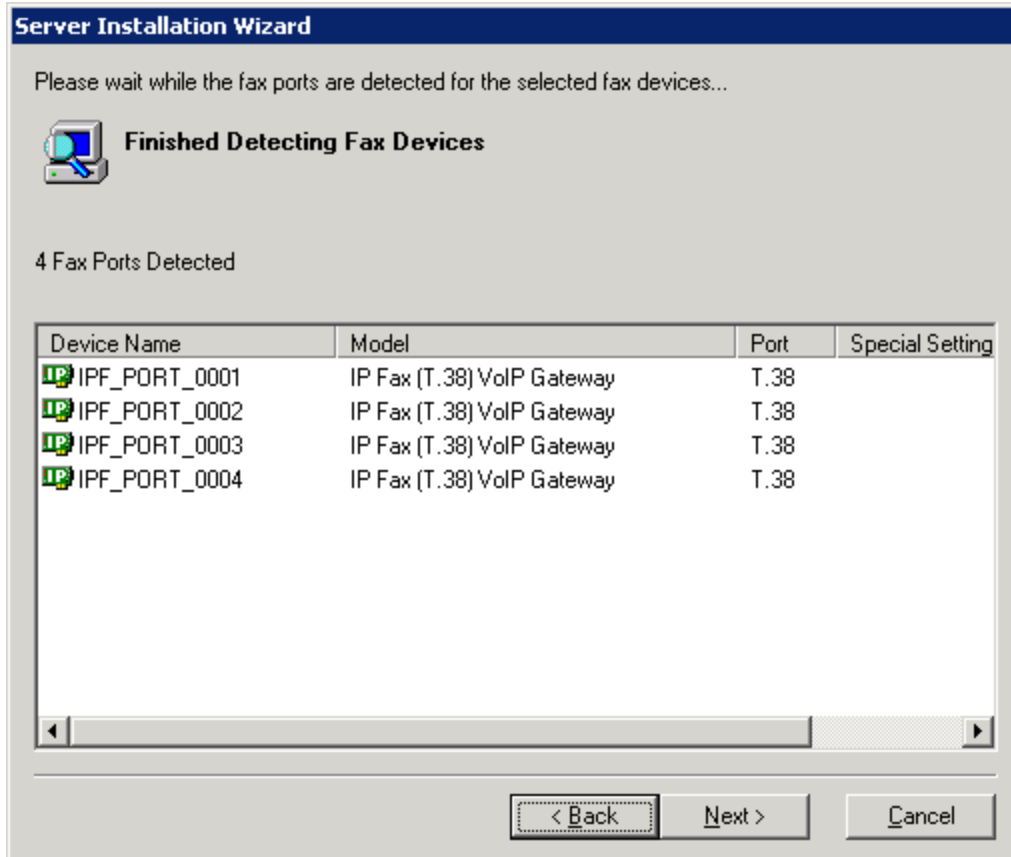




Setup will need to know how many ports to configure NET SatisFAXtion for. Use the defaults unless you need to use a different port count.



Click Next.

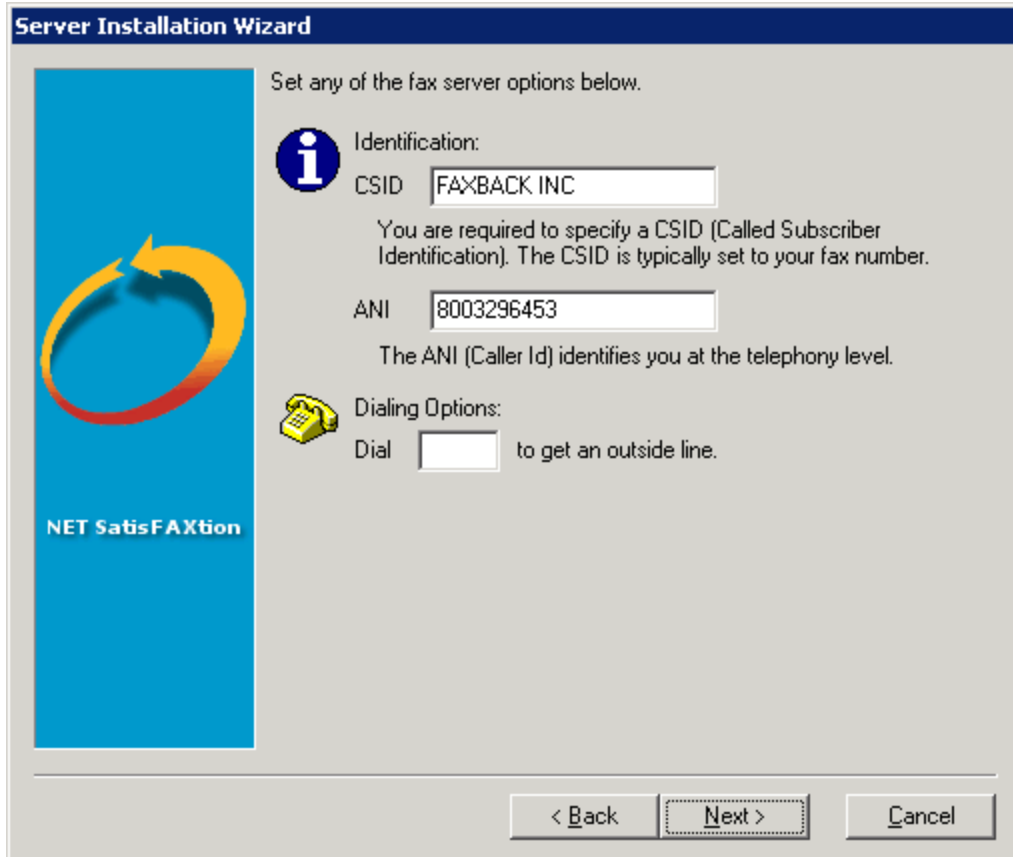


Click Next.

Setup will now ask you for a Called Subscriber Identification (CSID). A CSID is how your fax server will identify itself to other fax devices. It is also typically printed at the very top of all faxes it sends out. It may be set to anything. Most users will set this to their fax number or their company name.

You will also need to provide a default ANI (Caller ID). Most users will set this to their main fax number.

Setup will also give you the option to specify a digit to get an outbound line. For example, if calls go through a PBX phone system that requires a "9" to get an outside line. For more advanced dialing rules, please see the Administration Guide about the Validation Editor.



Click Next. You have now completed the AudioCodes portion of Setup. Please return to the Installation Guide, page 19 (README FIRST Installation Guide.pdf), to continue with the installation.

Configuring the AudioCodes MediaPack for DTMF Collection

Open a web browser and type in the IP address assigned to the AudioCodes MediaPack. The login screen appears.

Username = Admin

Password = Admin

(Both A's are capitals)



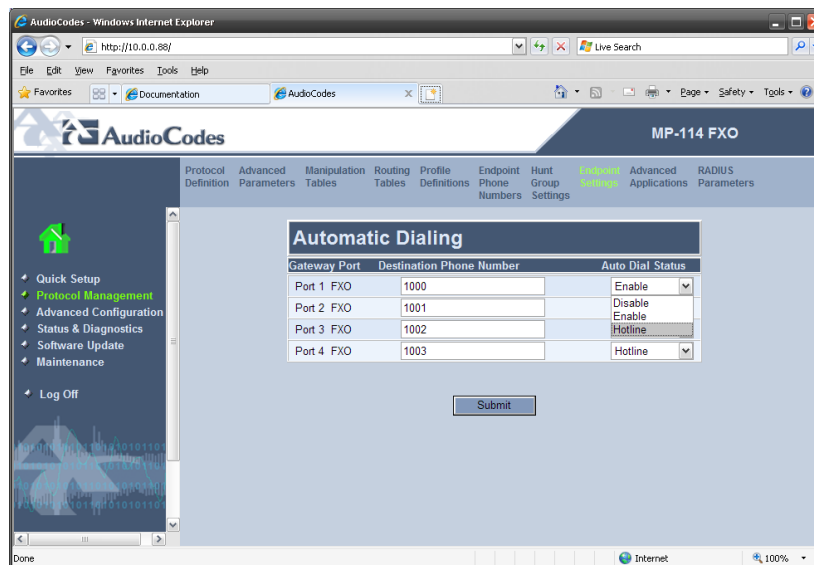
Click on Protocol Management

Click on Endpoint Settings – Automatic Dialing

Set Destination Phone numbers to 1000, 1001, etc (numerically ascending) for each port

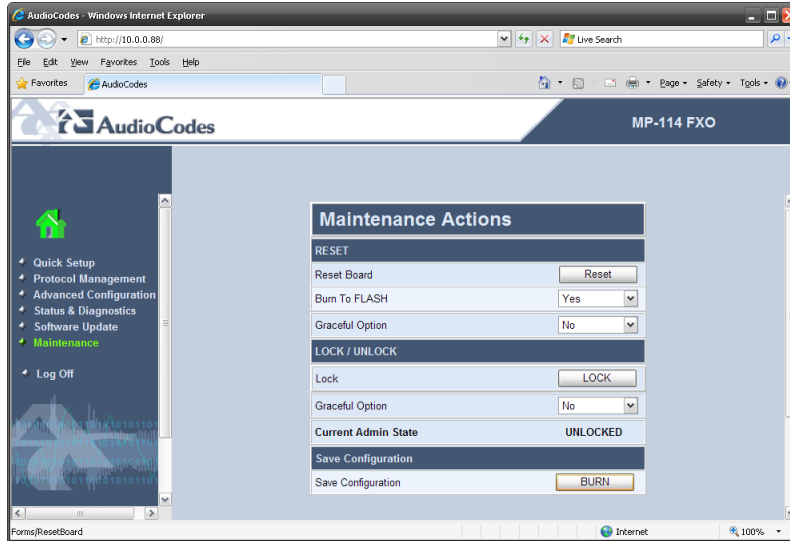
Set Auto Dial Status to Hotline for each port

Click Submit



Click Maintenance

Click Burn to burn all changes to flash memory



Configuring the MediaPack (FXS only) for analog DID Collection

If you have analog DID trunks (NOT PHONE LINES WITH DIAL TONE) configure the following two settings.

Click on Protocol Management

Hover Advanced Parameters and click on General Parameters

Under General Parameters, set Enable DID Wink to Enabled

Under Disconnect and Answer Supervision, set Enable Polarity Reversal to Enabled

General Parameters	
IP Security	Disable
Filter Calls to IP	Don't Filter
! Enable Digit Delivery to Tel	Disable
! Enable Digit Delivery to IP	Disable
RTP Only Mode	Disable
PSTN Alert Timeout	180
Enable DID Wink	Enable
Disconnect and Answer Supervision	
Enable Polarity Reversal	Enable
Enable Current Disconnect	Disable

Click Submit

Click Maintenance

Click Burn to burn all changes to flash memory